

# Vitreia® 5.2



For full-power advanced applications with imaging solutions for clinical specialties, Vitrea is the solution. Customize this software with any or all of our advanced clinical applications, and seamlessly integrate your work into the PACS workflow with a few simple clicks.

## **Vitreia Advanced applications includes imaging solutions for:**

### **Cardiac**

This specialized set of CT cardiac applications enables the assessment of coronary artery disease, analysis of cardiac function, and interventional and EP procedure planning.

“ Vital Images offers the easiest to learn and use enterprise-wide tools for reading cardiovascular images.”

**Tony DeFrance, MD, FACC**

Clinical Associate Professor at Stanford Medical School  
SCCT Board of Directors, National Director of SCCT Workgroups

### **Vascular**

This comprehensive suite of specialized tools facilitates quick, confident evaluations of CT and MR angiography studies for identification, characterization and interventional planning for vascular diseases. Effectively assess vessels with Vessel Probe technology and communicate results and images with clinical impact.

### **Neuro**

Our neuro suite provides tools to visualize and characterize aneurysms, stenosis and other neurologocial defects in CT and MR. The CT perfusion package allows ER physicians to quickly and easily generate blood flow maps for suspected ischemic stroke with just a few simple clicks. The suite provides other strong neuro-radiology tools such as MR Tumor volume measurements.

### **Oncology**

From identifying regions of interest to tumor tracking, this suite of applications and tools provides advanced capabilities to support analysis and treatment decisions. The Lung Nodule Analysis helps analyze nodules through multiple studies to determine growth patterns and make comparative reviews.

### **CT Virtual Colonoscopy**

Enables both a 2D and 3D evaluation of the colon.

### **Orthopedic Visualization**

View different types of orthopedic anatomy, from metal hardware within the spine to actual joints.

## Key New Features in Vitrea® 5.2 Include:

### New CT Cardiac Multi-Chamber Analysis Applications

- Automated atrial and ventricular chamber segmentation and functional measurements
- Leverages low-dose CT scanning protocols

### Cardiovascular CTA Analysis

- Vessel Probe & Vessel Walk enhancements ease manipulation and navigation of complicated cardiac and vascular anatomy
- Multi-point vessel seed points, trimming and editing increase read flow accuracy and speed

### Workflow Tools to Boost your Productivity

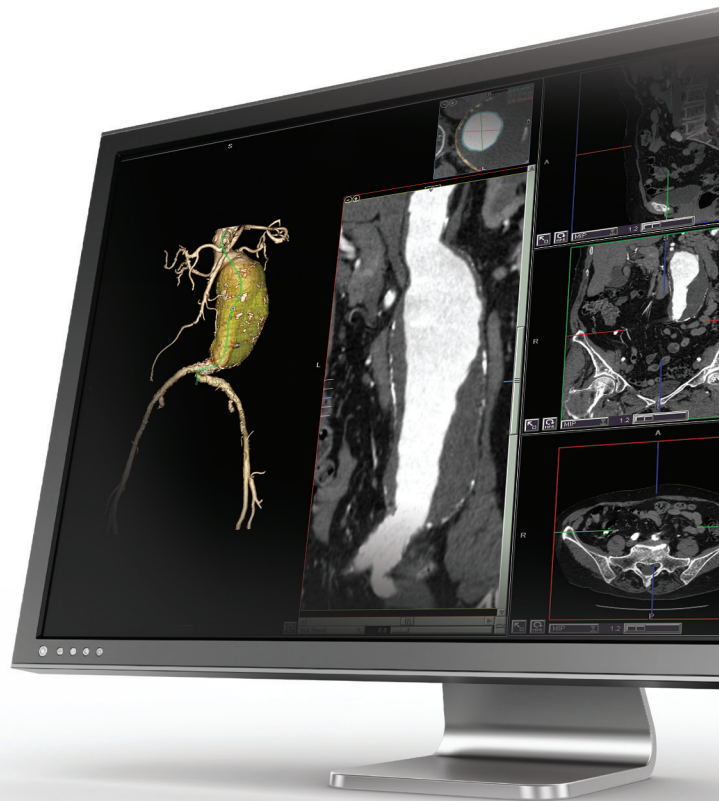
- Single-click Volume Segmentation
- Web-based access to the MeVis Visia™ CT Lung CAD and Medicsight ColonCAD™ results within Vitrea Enterprise Suite (ColonCAD™ available outside the U.S. only)
- Edge detecting contouring and automated table removal speed Multi-Region Segmentation read flow by anticipating your needs

### Additional Platform Support

- Microsoft® Windows® 7 clients
- Support for SQL 2008 and SQL Express editions

“ We use and prefer the Vital solution because of its speed, remarkable ease of use, reliability, ultra high quality volume rendering capabilities, and comprehensive package of clinically relevant software applications. The Vital solution improves our diagnostic confidence and accuracy. This translates into improved patient care.”

**Pablo Villablanca, MD**  
Associate Professor of Radiology  
Director, Image Processing Laboratory  
UCLA Medical Center



Vital Images, Inc. is a market leader in advanced visualization software solutions for physicians and healthcare specialists. The company's sophisticated technology gives radiologists, cardiologists, oncologists and other medical specialists productivity and communications tools that can be accessed throughout the enterprise and via the Web, anytime, anywhere to improve patient diagnosis and outcomes. Vitrea® software is utilized at more than 4,000 hospitals in over 80 countries. Established in 1988 and headquartered in Minneapolis, Vital Images also has offices in Europe and Asia. For more information, visit [www.vitalimages.com](http://www.vitalimages.com).

Vital Images, Inc. | 5850 Opus Parkway, Suite 300 | Minnetonka, MN 55343 | 952.487.9500