

Integration



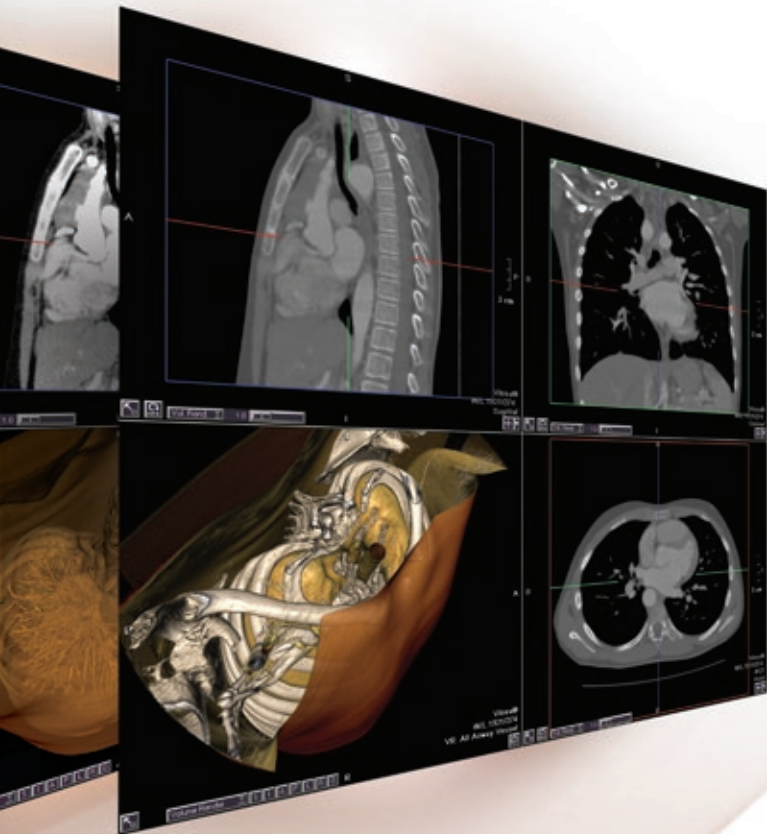
Vital Images' software gives you time-saving productivity and communication tools that can be accessed throughout the enterprise and via the Web for easy use in your day-to-day medical practice. Additionally, Vital Images' strength in strategic partnerships, including industry-leading Picture Archiving and Communications Systems (PACS) and Computer-Aided Detection (CAD) companies, expand your capabilities and facilitate access to advanced visualization software.

Vitre Enterprise Suite provides a set of flexible integration APIs to facilitate direct access to Vital's clinical workflows from your PACS, all provided via a solid data management solution called Vital Image Management System (VIMS).

You have told us that a one-size-fits-all solution isn't likely to fit anyone. You need a customized, user-friendly, tightly integrated system that communicates with your archives.

We begin this integration by gaining an understanding of how you work and what your organization needs. We research how you would use our portfolio of tools, then we work with you to design a solution that fits your organization.

Vital Images' scalable architecture allows you to grow and change with a predictable cost of ownership by using off-the-shelf hardware. Because you're licensing software and access, not hardware, you're in control of what you spend. And if an issue arises, our customer support staff is ready to help.





Key Features

- Ease of use
- Speed
- Scalability
- Predictable cost of ownership
- Integration flexibility
- Off-the-shelf hardware
- Vendor neutral modality
- Easy-to-coordinate integration
- Fully supported by premium customer service package
- Optimization consulting option

Context Sharing and Data Integration

Vitre Enterprise Suite supports interfaces that enable patient/study series context sharing and integration with your PACS.

- Save time and effort. When you launch Vitrea, it automatically opens to the patient study you're working on in PACS.
- Save any new data to PACS with a few simple clicks.
- One master copy of your image is available via the Web and across the enterprise, facilitating accessibility and communication among you and your colleagues.

Plugging Vitrea Enterprise Suite into Your Existing Environment

The Vitrea Enterprise Suite currently supports two standard integration interfaces:

- URL-based
- Command Line Driven

For more technical information, please refer to the Integrated Reference materials available through Vital Images Services at 800.208.3005.