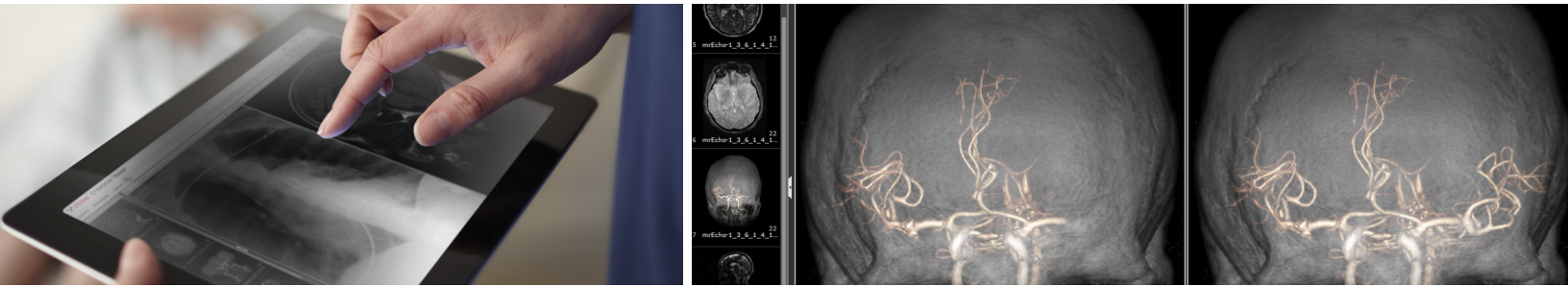


Vitre[®] View Functional Overview



Vitre[®] View provides fast and secure Web-based access to patient imaging across the enterprise. It integrates images effectively into the primary clinical workflows to improve care coordination by providing a single point of access to DICOM and multi-media images on a browser, tablet or smartphone.

Features

- High-performance viewer with fast access to images across multiple archives
- Zero-footprint, cross-platform, cross-browser and vendor neutral architecture
- DICOM and multi-media display in a single window
- Customizable actions, report display and PDF attachment
- Fully virtualizable
- On demand queries search archives in real-time directly from the source without the need for an index

Benefits

- Improves accessibility: enables clinicians easy access to patients' imaging data with a single sign-on
- Improves efficiency: decreases redundant work procedures and potential errors caused by poor image access and lack of cross-departmental communication
- Allows for IT scalability: leverage existing IT investments without the need to manage client-side installations and upgrades
- Related studies: Aggregates patient image data into a single window with or without a vendor neutral archive (VNA)

Capabilities and Tools

- 2D multi-modality review of data with standard 2D review tools
 - Arrow annotation tool allows you to point to specific areas of an image
 - Markup tools allow you to create measurements and add annotations, with indication of off-screen
 - Window/Level sets specific window-level, grayscale-inverted, a user preset or stored-DICOM
 - Zoom/Pan tools change the magnification or allow users to pan images
 - Geometry tools: Rotate Right, Rotate Left, Rotate 180, Flip Horizontal, Flip Vertical or Reset
- 3D and MPR image display
 - Volume rendering presets allow you to change the appearance of the 3D view
- Color and Greyscale Softcopy Presentation State (CSPS and GSPS)
- Easy study navigation and study sharing via email, including bookmarking
- View DICOM key image objects that have been saved with a study
- Comparative review allows users to view multiple studies
- Tablet and mobile device support, including smartphones*
- EHR, EMR and HIE integration

*When accessed from a mobile device, Vitrea View is for informational purposes only and is not intended for diagnostic use.

Linking

Linking is available across modalities and can be applied to duplicated series. A default set of linking options will be remembered by modality and applied to linked series, including: navigation, window/level and zoom per modality.

Cine and Auto-Cine

Cine allows users to play images for various modalities (such as XA, US, NM and CT) to see the anatomic artifacts in motion that cannot be seen in any single frame. Cine speed is easily adjustable via a slider bar.

Auto-Cine enables users of cine to quickly see the dynamic view of studies most often viewed in cine mode. When a study in cine is opened, it automatically begins playing at the expected rate. If more than one image is opened, they will all play in cine.

Image Area

- The Carousel provides you with a thumbnail view of all the relevant source images, providing an area in which you launch multiple sets of series in date order with the most recent on top
- Viewer displays images from the Carousel in a variety of available layouts
- A scroll bar displays when more than one image is available
- An outline displays along the perimeter of the image box to indicate that it is active
- Image overlay displays identifying information
 - Displays slice thickness (mm)
 - Displays image count
 - Orientation markers supported are anterior, posterior, inferior, superior, right and left

View Menu

- Provides ability to display or hide information specific to the following
 - Patient demographic information on all views in the Viewer window
 - Show HU Cursor Values activates a cursor on the selected image that defines Hounsfield Units (HUs) of the exact location specified
 - Reference lines on any applicable viewport
 - Display of angle, arrow and ruler markups created by user
- Markup Scrollbar Indicator adds a flag to indicate the slice where a markup has been added
- Reset removes any rulers and markups and resets the position of the image in the active Image box
- Reset All removes any rulers and markups and resets the position of the image in all active Image boxes

Vitrea® is a registered trademark of Vital Images, Inc. in the US and may have protection in other countries. Always refer to the Instructions For Use supplied with the product for complete instructions, indications and cautions.

Vital Images, Inc., a Canon Group company, is a leading provider of health imaging informatics solutions, including: advanced visualization, enterprise image viewing solutions and imaging intelligence technology designed to help healthcare organizations deliver exceptional care while optimizing resources across multi-facility organizations.

Made For life