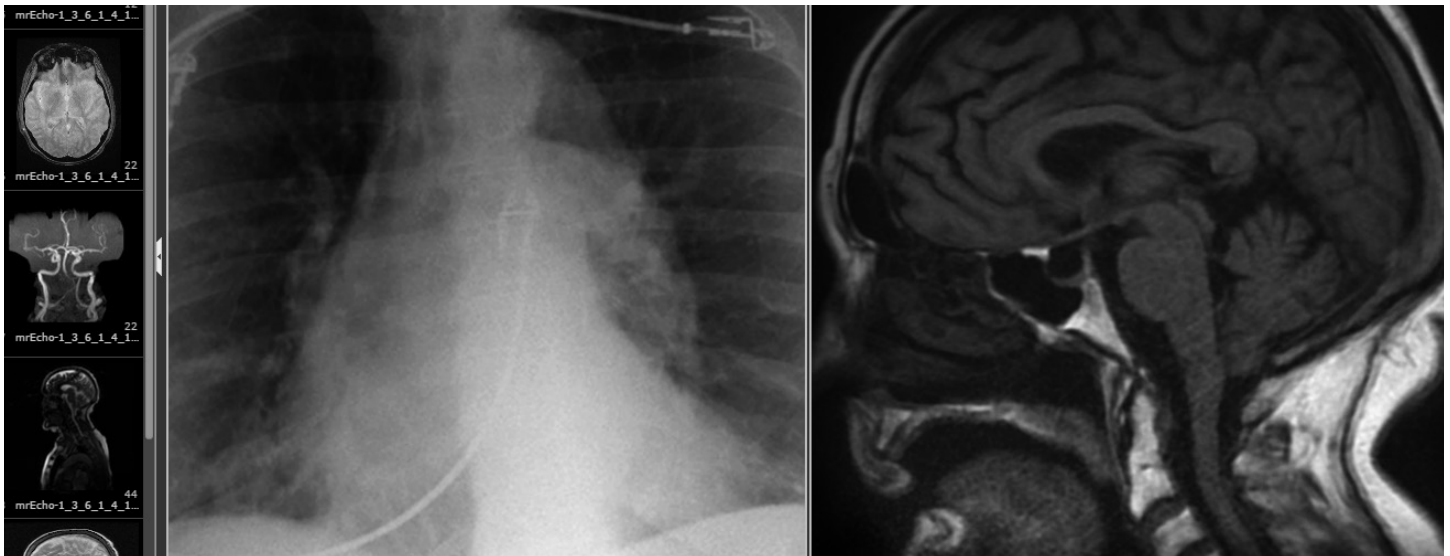


Johns Hopkins Medicine (JHM) Case Study

Direct access to full patient imaging history within the EMR



Johns Hopkins Medicine (JHM), a leading health system in Baltimore, includes six academic and community hospitals, four suburban health care and surgery centers, more than 30 primary health care outpatient sites, imaging centers as well as programs for national and international patient activities. JHM was looking for easy access to image viewing from within their electronic medical record (EMR) system. Johns Hopkins found a solution that enables them to view the full patient imaging history quickly and efficiently within their EMR.

The Challenge

Like many healthcare organizations today, JHM was interested in providing a consistent view of patient information across the enterprise and, to this end, is in the process of rolling out a new EMR. The new system from Epic is live and in use at several JHM facilities. At the same time, JHM has been working to provide enterprise access to patient imaging history and to clinicians directly from the EMR system.

Prior to implementing an enterprise viewing solution, clinicians generally had limited access to patients' imaging studies. They could only view images stored in the local picture archiving and communication system (PACS) and only if a workstation with the appropriate PACS client was available. When multiple PACS systems, multiple PACS clients, and multiple facilities were brought into the mix, the challenges grew exponentially. Clinicians were burdened with identifying which PACS the images were located in, and then they had to learn and use different PACS client user interfaces. At the same time, IT was challenged to provide convenient, secure access and support of PACS clients across all locations. It is not surprising that these limitations significantly restricted the accessibility of imaging to the clinicians.

JHM had a vision of providing all clinicians with enterprise-wide access to medical images - accessing imaging studies directly through the EMR, discovering and including prior studies regardless of location and allowing side-by-side comparison of these images. Ideally, this would be provided from a single web-based system where clinicians would learn once and then access it through the EMR via their existing laptops, desktops and mobile devices.

Johns Hopkins Medicine (JHM) Case Study

Direct access to full patient imaging history within the EMR

The Solution

JHM selected and implemented the VitreaView® enterprise viewer in phase one of the enterprise viewer initiative. Clinicians can view patient images, radiology reports and related documents from within the EMR via secure link that integrates with JHM's single sign-on mechanism eliminating an extra login prompt. They launch VitreaView by simply clicking on a link in the EMR and within seconds they are viewing the images and have access to patient prior imaging studies stored within the VNA. Since its introduction at JHM, clinicians have come to rely on the ability to quickly access patients' medical imaging, and consequently, VitreaView adoption has increased steadily on a month-by-month basis.

Phase two extended this capability by implementing VioStream™ technology to provide direct access to studies stored in the PACS at Johns Hopkins Suburban Hospital and Sibley Memorial Hospital facilities without requiring data migration, routing, or caching.

The Success

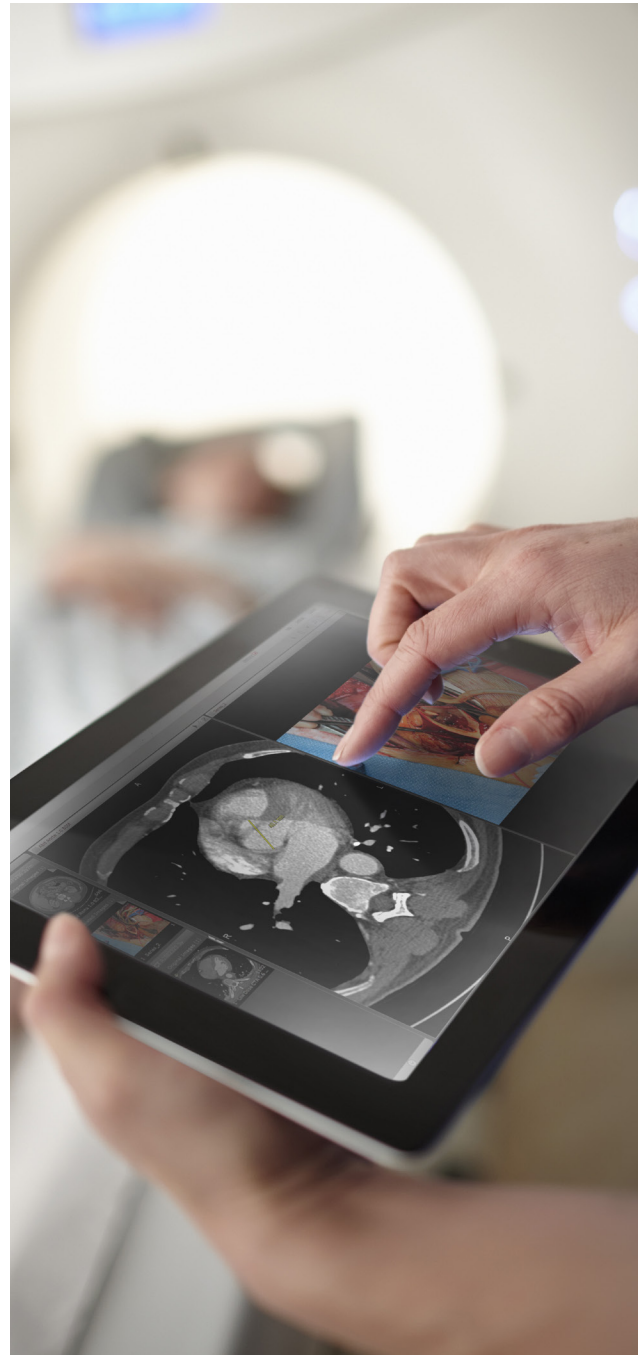
Quick access to all studies, regardless of their location within the JHM enterprise, was met with enthusiasm as it resolved a long-standing issue of study access across the enterprise.

The combination of VitreaView with VioStream proved to be a solution that addressed the enterprise imaging challenges at JHM. VitreaView provides secure web-based, zero-footprint access to patient imaging, and VioStream extends this access across multiple systems and archives without costly data migration. Ultimately, this solution enables a holistic view of patients' medical imaging records, thus enhancing clinical decision support and communication.

Critical success factors in the JHM implementation of VitreaView and VioStream include:

- Rapid access to imaging studies within the patients' records in the EMR, with an intuitive suite of tools that provides clinicians with a full patient imaging history.
- Access to a broad set of imaging studies, regardless of how many PACS or VNA systems they are stored in, or where they are located.
- Easy to deploy, easy to maintain solution supporting IT security and reliability needs.

When accessed from a mobile device, VitreaView is for informational purposes only and not intended for diagnostic use.



VITAL

Vital Images, Inc., a Toshiba Group Company, is a leading provider of health imaging informatics solutions, including: advanced visualization, enterprise image viewing solutions and imaging intelligence technology designed to help healthcare organizations deliver exceptional care while optimizing resources across multi-facility organizations.

Vital Images, Inc. | 5850 Opus Parkway, Suite 300 | Minnetonka, MN 55343 | USA | +1 866.433.4624 | Vital Images Europe | Zilverstraat 1 | 2718 RP Zoetermeer | Netherlands | +31 79 206 5800

www.vitalimages.com

© 2016 Vital Images, Inc. | M-06211A